



ORG
Office of the Registrar General



REGISTRATION AND PROTECTION OF INTELLECTUAL PROPERTY RIGHTS

INDUSTRIAL PROPERTY JOURNAL

(Journal of Trademarks and Patents)

N° 12/2013

The 15th June, 2013

Published Monthly

Application accepted for registration

NOTICE is given that any person who has grounds of opposition to the Registration of any of the trade marks advertised herein according to these classes may within 30 days from the date of this Journal, Lodge a notice of opposition Letter from *16th June to 15th July 2013*

The period of lodging the notice of opposition may be extended by Registrar as he deems fit and upon such terms as he may direct. Any request for such extension should be made to the Registrar to reach him before the expiry of the period allowed.

INID Codes for Marks

Code	Interpretation
111	Registration number
151	Date of registration
210	Application number
220	Filing date
511	Internationalification and/ or list of goods and services(NICE Class)
571	Description of mark
732	Applicant's name and address
811	Representative's name
740	Country of which the holder is a national

1.0 TRADEMARKS (APPLICATION FILED)

571



210 7686/LRK

MÜTZIG



220 13/06/2013

511 32

571 MUTZIG LOGO

732 PREMIUM BEVERAGES INTERNATIONAL B.V
TWEEDE WETERINGPLANTSOEN 21, 1017 ZD,
AMSTERDAM

811 SB PARTNERS

740 THE NETHERLANDS

2.0 TRADEMARKS (APPLICATION FILED)

571



210 7630/LRK



220 13/06/2013

511 07

571 FOTON DEVICE

732 TIANJIN LOVOL HEAVY INDUSTRY CO., LTD
WEST OF JINWEI ROAD, BEICHEN, TIANJIN

811 SB PARTNERS

740 CHINA

3.0 TRADEMARKS (APPLICATION FILED)

571



210 AP-10000476



220 13/06/2013

511 32

571 HEINEKEN LABEL

732 HEINEKEN BROUWERIJEN B.V

TWEEDE WETERINGPLANTSOEN 21, 1017 ZD,

AMSTERDAM

811 SB PARTNERS

740 THE NETHERLANDS

4.0 TRADEMARKS (APPLICATION FILED)

571



210 7685/LRK



220 13/06/2013

511 32

571 TURBO KING LOGO AND DEVICE

732 PREMIUM BEVERAGES INTERNATIONAL B.V

TWEEDE WETERINGPLANTSOEN 21, 1017 ZD,

AMSTERDAM

811 SB PARTNERS

740 THE NETHERLANDS

5.0 TRADEMARKS (APPLICATION FILED) 571



210 AP-10000458

MURANO



220 13/06/2013

511 12

571 MURANO LOGO

732 NISSAN JIDOSHA KABUSHIKI KAISHA

N^o2 TAKARACHO, KANAGAWA-KU, YOKOHAMA-SHI

811 SB PARTNERS

740 JAPAN

6.0 TRADEMARKS (APPLICATION FILED) 571



210 7687/LRK

TURBO KING



220 13/06/2013

511 32

571 TURBO KING LOGO

732 PREMIUM BEVERAGES INTERNATIONAL B.V

TWEEDE WETERINGPLANTSOEN 21, 1017 ZD,

AMSTERDAM

811 SB PARTNERS

740 THE NETHERLANDS

7.0 TRADEMARKS (APPLICATION FILED)

571



210 AP-10000338



220 13/06/2013

511 06, 07 11 and 19

571 TMK LOGO AND DEVICE IN COLOUR

732 OAO"TMK"

40 BLDG 2a, POKRAVKA STREET, MOSCOW 105062

811 SB PARTNERS

740 RUSSIAN FEDERATION

8.0 TRADEMARKS (APPLICATION FILED)

571



210 AP-10000339



220 13/06/2013

511 06, 07, 11 and 19

571 TMK LOGO AND DEVICE

732 OAO"TMK"

40 BLDG 2a, POKRAVKA STREET, MOSCOW 105062

811 SB PARTNERS

740 RUSSIAN FEDERATION

9.0 TRADEMARKS (APPLICATION FILED)

571



210 AP-10001779

NIKKI



220 13/05/2013

511 26

571 NIKKI LOGO

732 P. Bhavanbhai Family Trust

20 8th Avenue, Houghton, Johannesburg, Gauteng

811 Blessed Law Firm

740 Republic of South Africa

10.0 TRADEMARKS (APPLICATION FILED)

571



210 AP-10001781

AMiGO



220 15/05/2013

511 5

571 AMIGO STYLISED

732 BEYAZ KAGIT VE HIJYENIK URUNLER TEMIZLIK INSAAT

SANAYI TICARET LIMITED SIRKET

28 Cadde NO :5, Yuregir, Adana

811 Blessed Law Firm

740 TURKEY

11.0 TRADEMARKS (APPLICATION FILED)

571



210 AP-10001782

PANACIN



220 15/05/2013

511 05

571 PANACIN LOGO

732 ADCOCK INGRAM INTELLECTUAL PROPERTY LIMITED

1 NEW ROAD, CORNER OF NEW ROAD & 7TH STREET, MIDRAND

811 Blessed Law Firm

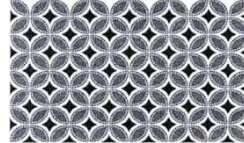
740 SOUTH AFRICA

12.0 TRADEMARKS (APPLICATION FILED)

571



210 AP-10001783



220 15/05/2013

511 02

571 PATTEN DEVICE (TRUE COLOUR)

732 KANSAI PLASCON PROPRIETARY LIMITED

BALVENIE BUILDING, KILDRUMMY OFFICE PARK,

UMHLANGA DRIVE, PAULSHOF, GAUTENG

811 TRUST LAW CHAMBERS

740 SOUTH AFRICA

13.0 TRADEMARKS (APPLICATION FILED)

571



210 AP-10001785

**true
colour**



220 16/05/2013

511 02

571 TRUE COLOUR LOGO

732 KANSAI PLASCON PROPRIETARY LIMITED

BALVENIE BUILDING, KILDRUMMY OFFICE PARK,

UMHLANGA DRIVE, PAULSHOF, GAUTENG

811 TRUST LAW CHAMBERS

740 SOUTH AFRICA

14.0 TRADEMARKS (APPLICATION FILED)

571



210 AP-10001789

VODACOM



220 21/05/2013

511 36

571 VODACOM LOGO

732 VODAFONE GROUP PLC

VODAFONE HOUSE, THE CONNECTION, NEWBURY

BERKSHIRE RG 14 2FN

811 BLESSED LAW FIRM

740 UNITED KINGDOM

15.0 TRADEMARKS (APPLICATION FILED)

571



210 AP-10001793

PREZINGA



220 21/05/2013

511 05

571 PREZINGA LOGO

732 JANSSEN R&D IRELAND

EASTGATE VILLAGE, EASTGATE, LITTLE ISLAND

811 Blessed Law Firm

740 IRLAND

16.0 TRADEMARKS (APPLICATION FILED)

571



210 AP-10001812



220 22/05/2013

511 09

571 SUPER NO.1

732 SUPER STAR ELECTRONICS

GASABO-KACYIRU

811 RWAGATARE SAM

740 RWANDA

17.0 TRADEMARKS (APPLICATION FILED)

571



210 AP-10001843



220 22/05/2013

511 12

571 CNHTC& DEVICE

732 CHINA NATIONAL HEAVY DUTY TRUCK GROUP CO., LTD

NO 53, WUYINGSHAN ZHONG ROAD, JINAN, SHANDONG

811 TRUST LAW CHAMBERS

740 CHINA

18.0 TRADEMARKS (APPLICATION FILED)

571



210 AP-10001844



220 23/05/2013

511 31

571 ALYOS UMWIHARIKO

732 ALYOS SUPPLY COMPANY LTD

GASABO-KIMIHURURA

811 NDAYISHIMIYE JEAN PAUL

740 RWANDA

19.0 TRADEMARKS (APPLICATION FILED)

571

SOCIETE REGIONALE D'ASSURANCES



210 AP-10001848

"SORAS"



220 24/05/2013

511 36

571 SOCIETE REGIONALE D'ASSURANCES "SORAS"

732 SORAS GROUP LIMITED

NYARUGENGE-NYARUGENGE, 4742 KIGALI

811 MPORANYI CHARLES

740 RWANDA

20.0 TRADEMARKS (APPLICATION FILED)

571



210 AP-10001849

SMOOTH'N SHINE



220 24/05/2013

511 03

571 SMOOTH'N SHINE LOGO

732 HENKEL AG & CO.KGaA

HENKELSTRASSE 67, DUSSELDORF, 40586

811 TRUST LAW CHAMBERS

740 GERMANY

21.0 TRADEMARKS (APPLICATION FILED)

571



210 AP-10001851



220 24/05/2013

511 33

571 BLUE MOON VODKA LOGO

732 AFRICA SPRITS LTD

NAIROBI-MOMBASA ROAD, 61479-00200

811 UWOBATORANA DEOGRATIAS

740 KENYA

22.0 TRADEMARKS (APPLICATION FILED)

571



210 AP-10001854



220 27/05/2013

511 12

571 SITRAK & DEVICE

732 CHINA NATIONAL HEAVY DUTY TRUCK GROUP CO., LTD

NO 53, WUYINGSHAN ZHONG ROAD, JINAN, SHANDONG

811 TRUST LAW CHAMBERS

740 CHINA

23.0 TRADEMARKS (APPLICATION FILED)

571



210 AP-10001852

SITRAK



220 27/05/2013

511 12

571 SITRAK LOGO

732 CHINA NATIONAL HEAVY DUTY TRUCK GROUP CO., LTD

NO 53, WUYINGSHAN ZHONG ROAD, JINAN, SHANDONG

811 TRUST LAW CHAMBERS

740 CHINA

24.0 TRADEMARKS (APPLICATION FILED)

571



210 AP-10001853

SINOTRUK



220 27/05/2013

511 12

571 SINOTRUK LOGO

732 CHINA NATIONAL HEAVY DUTY TRUCK GROUP CO., LTD

NO 53, WUYINGSHAN ZHONG ROAD, JINAN, SHANDONG

811 TRUST LAW CHAMBERS

740 CHINA

25.0 TRADEMARKS (APPLICATION FILED)

571



210 AP-10001855

HOWO-A7



220 27/05/2013

511 12

571 HOWO-A7 LOGO

732 CHINA NATIONAL HEAVY DUTY TRUCK GROUP CO., LTD

NO 53, WUYINGSHAN ZHONG ROAD, JINAN, SHANDONG

811 TRUST LAW CHAMBERS

740 CHINA

26.0 TRADEMARKS (APPLICATION FILED)

571



210 AP-10001856

HOWO



220 27/05/2013

511 12

571 HOWO LOGO

732 CHINA NATIONAL HEAVY DUTY TRUCK GROUP CO., LTD

NO 53, WUYINGSHAN ZHONG ROAD, JINAN, SHANDONG

811 TRUST LAW CHAMBERS

740 CHINA

27.0 TRADEMARKS (APPLICATION FILED)

571



210 AP-10001857

VIRUNGA MIST



220 29/05/2013

511 32

571 VIRUNGA MIST LOGO

732 SKOL INTERNATIONAL DEVELOPMENT LIMITED

CLARENDON HOUSE, CHURCH STREET WEST,

HAMILTON HM DX HM 1022

811 BLESSED LAW FIRM

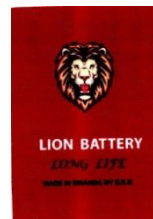
740 BERMUDA

28.0 TRADEMARKS (APPLICATION FILED)

571



210 AP-10001858



220 31/05/2013

511 1, 6 and 11

571 LION BATTERIES LOGO

732 SOCIETE RWANDAISE DES BATTERIES

KICUKIRO-GIKONDO, P.O.BOX 1896

811 MUTANGANA NDIKUMANA DAVID

740 RWANDA

29.0 TRADEMARKS (APPLICATION FILED) 571



210 AP-10001859



220 31/05/2013

511 1and 24

571 KIGALI FOAM MATTRESSES" SINZIRA NEZA" LOGO

732 SOCIETE RWANDAISE DES BATTERIES

KICUKIRO-GIKONDO, P.O.BOX 1896

811 MUTANGANA NDIKUMANA DAVID

740 RWANDA

30.0 TRADEMARKS (APPLICATION FILED) 571



210 AP-10001860



220 30/05/2013

511 12

571 RIO LOGO

732 HIGHLANDS NIMERAL WATER COMPANY LTD

IHURURU ROAD, P.O.BOX 1517-10100 NYERI

811 TRUST LAW CHAMBERS

740 KENYA

31.0 TRADEMARKS (APPLICATION FILED)

571



210 AP-10001862

KONE



220 03/06/2013

511 6, 7, 9 and 37

571 KONE LOGO

732 KONE CORPORATION

KARTANONTIE 100330 HELSINKI

811 TRUST LAW CHAMBERS

740 FINLAND

32.0 TRADEMARKS (APPLICATION FILED)

571



210 AP-10001871



220 04/06/2013

511 9, 16, 35, 38, 41, 42 and 45

571 WECHAT LOGO

732 TENCENT HOLDINGS LIMITED

P.O.BOX 2681 GT, CENTURY TARD, CRICKET SQUARE, HUTCHINS DRIVE

811 BLESSED LAW CHAMBERS

740 COYMAN ISLANDS

33.0 TRADEMARKS (APPLICATION FILED)

571



210 AP-10001872

EY



220 04/06/2013

511 35 and 36

571 EY LOGO

732 EYGN LIMITED

ONE MONTANGUE PLACE, EAST BAY STREET, NASSAU

811 BLESSED LAW FIRM

740 BAHAMAS

34.0 TRADEMARKS (APPLICATION FILED)

571



210 AP-10001880

BOTO



220 06/06/2013

511 12

571 BOTO STYLIZED

732 SHANDONG WANDA BOTO TYRE CO., LTD

NO 68, YONGSHEN ROAD, KENLI COUNTY, DONGYING CITY

SHANDONG PROVINCE

811 BLESSED LAW FIRM

740 CHINA

35.0 TRADEMARKS (APPLICATION FILED)

571



210 AP-10001881



220 06/06/2013

511 12

571 ECED STYLIZED LOGO

732 SHANDONG WANDA BOTO TYRE CO., LTD

NO 68, YONGSHEN ROAD, KENLI COUNTY, DONGYING CITY

SHANDONG PROVINCE

811 BLESSED LAW FIRM

740 CHINA

36.0 TRADEMARKS (APPLICATION FILED)

571



210 AP-10001882



220 06/06/2013

511 12

571 WE RUN LOGO& DEVICE

732 SHANDONG WANDA BOTO TYRE CO., LTD

NO 68, YONGSHEN ROAD, KENLI COUNTY, DONGYING CITY

SHANDONG PROVINCE

811 BLESSED LAW FIRM

740 CHINA

37.0 TRADEMARKS (APPLICATION FILED)

571



210 AP-10001886

ENTERPRISE



220 28/05/2013

511 39

571 ENTREPRISE LOGO

732 ENTREPRISE HOLDINGS, INC. a

600 CORPORATE PARK DRIVE, ST LOUIS, MISSOURI

811 R& ASSOCIATES

740 UNITED STATES OF AMERICA

38.0 TRADEMARKS (APPLICATION FILED)

571



210 AP-10001887



220 28/05/2013

511 29, 30 and 31

571 BRF LOGO

732 BRF-BRASIL FOODS S.A.

R JORGE TZACHEL, 475, CITY OF ITAJAI, SANTA CATARINA

811 R& ASSOCIATES

740 BRASIL

39.0 TRADEMARKS (APPLICATION FILED) 571



210 AP-10001888

Mahindra
Rise.



220 28/05/2013

511 16

571 MAHINDRA RISE LOGO

732 MAHINDRA & MAHINDRA LIMITED

MAHINDRA TOWER, DR. G.M. BHOSALE MARG,

P.K. KURNE CHOWK, WORLI, MUMBAI-400 018

811 R& ASSOCIATES

740 INDIA

40.0 TRADEMARKS (APPLICATION FILED) 571



210 AP-10001889

Rise.



220 28/05/2013

511 16

571 RISE LOGO

732 MAHINDRA & MAHINDRA LIMITED

MAHINDRA TOWER, DR. G.M. BHOSALE MARG,

P.K. KURNE CHOWK, WORLI, MUMBAI-400 018

811 R& ASSOCIATES

740 INDIA

41.0 TRADEMARKS (APPLICATION FILED) 571



210 AP-10001890

Mahindra



220 28/05/2013

511 12

571 MAHINDRA LOGO

732 MAHINDRA & MAHINDRA LIMITED

MAHINDRA TOWER, DR. G.M. BHOSALE MARG,

P.K. KURNE CHOWK, WORLI, MUMBAI-400 018

811 R& ASSOCIATES

740 INDIA

42.0 TRADEMARKS (APPLICATION FILED) 571



210 AP-10001899

Rincenc BTP



220 12/06/2013

511 35, 41 and 42

571 RINCENC BTP

732 RINCENC BTP SERVICES SAS

39 RUE MICHEL ANGE, PARC ELYSEE, 91026

811 BLESSED LAW FIRM

740 FRANCE

43.0 TRADEMARKS (APPLICATION FILED) 571



210 AP-10001900



220 12/06/2013

511 35 and 36

571 BEAM DEVICE IN COLOUR

732 EYGN LIMITED

ONE MONTANGUE PLACE, EAST BAY STREET, NASSAU

811 BLESSED LAW FIRM

740 BAHAMAS

44.0 TRADEMARKS (APPLICATION FILED) 571



210 AP-10001901



SINCE 1847

JACOB'S CREEK



220 12/06/2013

511 33

571 JACOB'S CREEK SINCE 1847 LOGO

732 PREMIUM WINE BRANDS PTY LTD

167 FULLARTON ROAD, DULWICH, SOUTH AUSTRALIA 5065

811 BLESSED LAW FIRM

740 AUSTRALIA

45.0 TRADEMARKS (APPLICATION FILED)

571



210 AP-10001891

IRIS



220 28/05/2013

511 9

571 IRIS LOGO

732 INTEL CORPORATION

2200 MISSION COLLEGE BOULEVARD, SANTA CLARA

CALIFORNIA 95052-8119

811 R& ASSOCIATES

740 USA